



HOTEL

A historical neo-renaissance-style building has been gently and tastefully transformed from a former prestigious seat of the Czechoslovak chamber of commerce into a contemporary deluxe Hotel KINGS COURT providing top quality services.

- 👑 139 guest rooms in 6 different categories
- 👑 unique conference facilities including historical Ballroom
- 👑 modern food and beverage outlets with stylish square restaurant terrace
- 👑 relaxing spa offering variety of treatments

ROOMS

- 👑 94 elegant Deluxe Rooms
- 👑 33 Executive Rooms facing the Republic Square
- 👑 6 Junior Suites with massage bathtub
- 👑 3 spacious Executive Suites with separated lounge area, balcony and massage bathtub
- 👑 2 King David Suites with separated lounge area, balcony and magnificent view of Republic Square and Municipal House
- 👑 1 Tower Duplex Suite with two balconies and magnificent view

RESTAURANT & BAR

- 👑 lively ADELE Restaurant facing the Republic Square with all year round operated terrace serving Mediterranean cuisine
- 👑 modern Majesty Lounge for business appointments and leisure breaks offering wide selection of cocktails

CONFERENCE FACILITIES

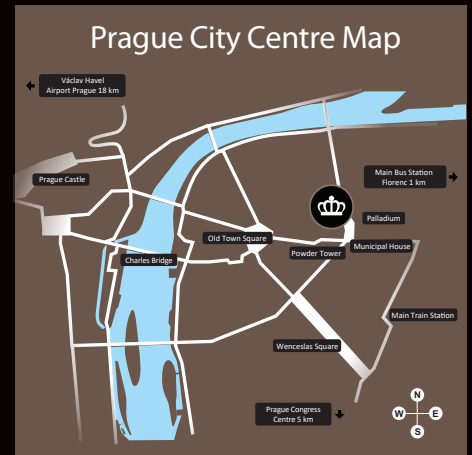
- 👑 majestic historical Ballroom Franz Josef I. with maximum capacity up to 170 guests
- 👑 Executive Suites suitable for small board and business meetings
- 👑 all conference rooms with day light and high speed internet and Wi-Fi connection

SPA & RELAX

- 👑 tranquil place to pamper yourself with variety of treatments
- 👑 unique precious stone massage
- 👑 three treatment rooms
- 👑 beauty room
- 👑 cosy pool with Jacuzzi
- 👑 steam room
- 👑 sauna
- 👑 fitness room

LOCATION








The hotel is located in Prague's Old Town, on the Republic Square, just few steps from the historical highlights of the city. Conveniently situated in the heart of business district, across the street from the Palladium, the most exciting shopping and leading office centre in Prague.

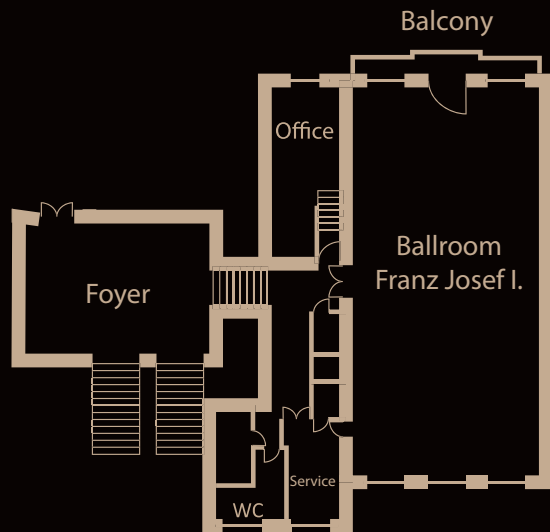


- 👑 Municipal House 10 m
- 👑 Powder Tower 50 m
- 👑 Old Town Square 250 m
- 👑 Wenceslas Square 250 m
- 👑 Main Train Station Hlavní nádraží 1 km
- 👑 Main Bus Station Florenc 1 km
- 👑 Prague Castle 3 km
- 👑 Václav Havel Airport Prague 18 km
- 👑 Prague Congress Centre 5 km



MEETING ROOMS CAPACITIES

Name	dimensions w×l×h (m)	area (sqm)	 theatre	 classroom	 u-shape	 geneve	 board	 banquet / cocktail	 reception
Ballroom Franz Josef I.	19×9×6,6	171	150	120	46	52	52	150	170
Executive Suite	4×6×3,1	24	10	10	10	10	10	8	10
Majesty Lounge	18×8×2,7	144	-	-	-	-	-	80	80



Ballroom Franz Josef I.

